

FINDINGS FROM THE HARLEM PAROLE REENTRY COURT

Zachary Hamilton, Ph.D.
zachary.hamilton@wsu.edu

2010-10-15

Harlem Reentry Court

- ◉ In operation since 2001
- ◉ Partnership
 - > New York State Division of Criminal Services
 - > Division of Parole
 - > Center for Court Innovation
- ◉ Reentry Court attempts to reduce recidivism by
 - > Increasing quality of discharge planning
 - > Greater attention during early transition
 - > Greater coordination and access to needed services

State of Prisoner Reentry

- ◎ Prison pop. 80s & 90s increased 600 percent
- ◎ Increase in incarceration resulted in 725,000 parolees released annually (Office of Justice Programs, 2007)
- ◎ Stricter sanctions for parolees
 - > 1/3rd prison pop. attributed to violations (Petersilia, 2000)
 - > Ineffective policy changes & “Supervision Effects”
 - Intensive Supervised Parole
 - Increased drug testing
 - Home confinement

Neighborhood Concentration

- ◎ Disproportion impact on poor urban areas
(Lynch and Sabol, 2001)
- ◎ Harlem as a key reentry area
 - > Located in Upper Manhattan
 - 2,200 released to parole annually
 - Roughly 50% of all of Manhattan (NYS Division of Parole, 2006)
 - > Upper Manhattan reentry concentrated in the East Harlem neighborhood
 - A seven block stretch “corridor for reentry”
 - 1 in 20 men have been incarcerated
 - High rate of poverty, jail admissions, & unemployment

Reentry Court Model

- ⦿ In response - OJP began Reentry Court Initiative
- ⦿ Provide graduated sanctions combined with social services (Travis, Solomon and Waul, 2001)
- ⦿ 9 pilot programs, including Harlem Reentry Court
 - > Currently \approx 25 nationwide

Reentry Court Model

◎ Common Elements

- > Assessment needs, multiple planning partners
- > Public court appearance with judicial involvement
- > Court monitored social services
- > Accountability to community
- > Graduated and parsimonious sanctions
- > Rewards for success

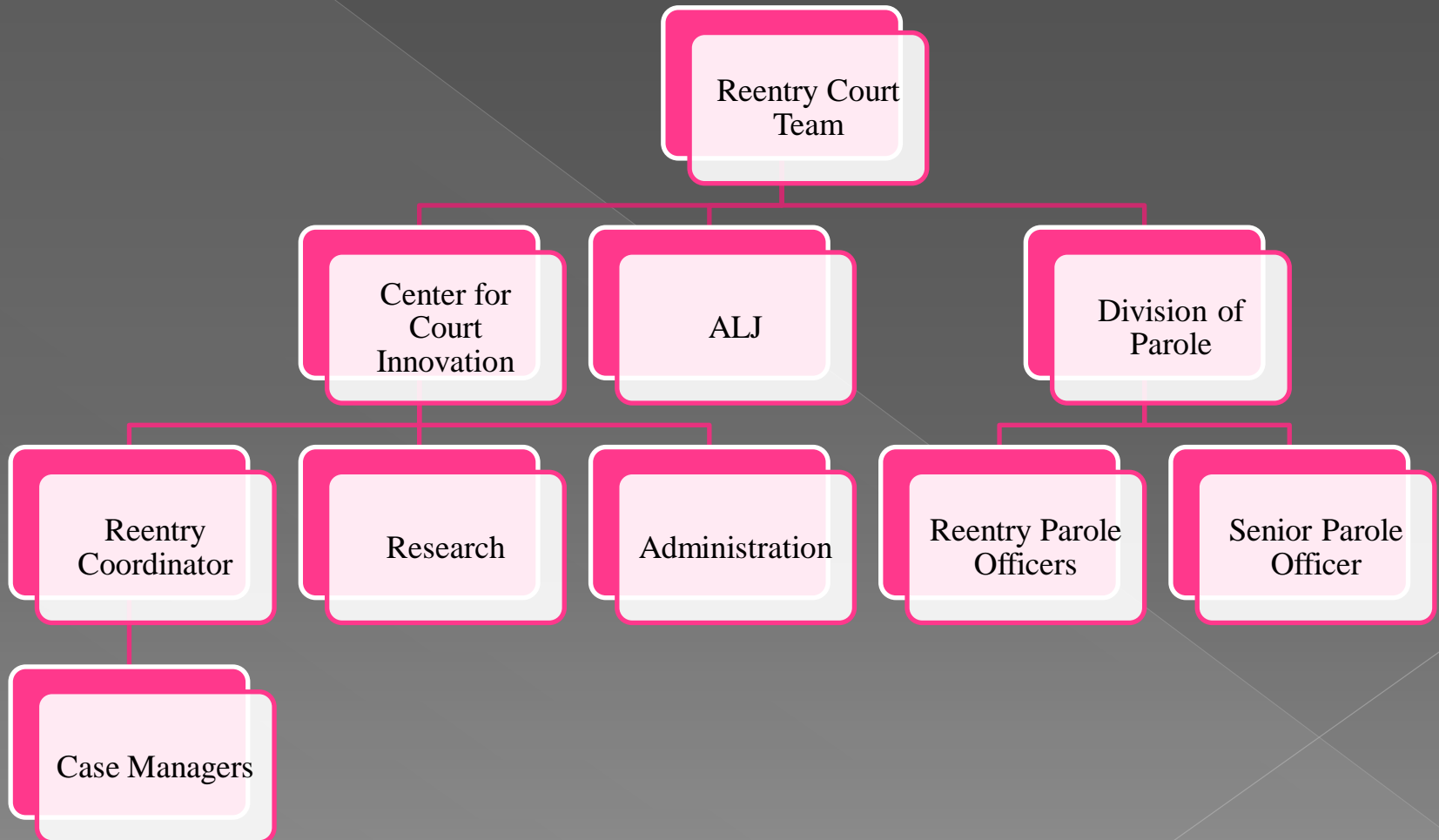
Harlem Reentry Court

- ◎ Common elements similar
- ◎ Participant progress
 - > Eligible participants identified pre-release
 - Reach-in
 - > Duration 6 months - 2 phases
 - 2 wks, weekly hearings Administrative Law Judge & mandated soc. Services
 - Bi-weekly hearings, transition to full-time employ, soc. service compliance
 - > Graduation
 - > Case Transfer

Reentry Court Team

- ◎ Center for Court Innovation Staff
 - > Reentry Coordinator
 - > Case managers
 - > Research
 - > Administration
- ◎ Administrative Law Judge
- ◎ Reentry Parole Officers
 - > Senior Parole officer

Reentry Court Team



Additional Components

- ◎ Micro-team

- > Reentry Court Team meets weekly
- > Supervision plan

- ◎ Macro-team

- > Monthly meeting of referral agencies

- ◎ On-site services

- > Licensed social workers
- > Individual and small group sessions

Lessons from Reentry Programming Findings

- ◎ Varying degrees of success
- ◎ Successful programs typically
 - > Meeting multiple domains of service need (Seiter & Kadela, 2003)
 - Specifically, vocational training, CBT and drug treatment
- ◎ Less than successful
 - > Poorly implemented - Project Greenlight (Wilson & Davis, 2006)
 - > Fail to account for the risk level (Lowenkamp & Latessa 2005)
 - > Increased intensity creating “supervision effects”
(Miethe, Lu & Reese, 2000; Petersilia, 1999; Travis, Solomon & Waul, 2001)

Study Design

- ◉ Retrospective
- ◉ Quasi-experimental
- ◉ Current Reentry Court sample
 - > November, 2002 through February, 2008
 - > N=317
- ◉ Comparison
 - > Traditional parolees released same time frame in Manhattan
 - > DCJS identified 20,750 parolees eligible
 - > Propensity score matching – 2:1

Baseline Characteristics of Study Sample Propensity Matching (N=951)

Pre-Release Characteristic	Reentry Court (n=317)	Comparison (n=634)
Mean Age	31	31
Male	100%	90%
Non-White	98%	98%
<i>Current Offense</i>		
Violent	15%	15%
Theft	18%	15%
Drug	68%	65%
<i>Mean Total Prior Arrests</i>	15	15
Mean Felony Arrests	8	8
Mean Drug Arrests	7	7
Mean Violent Felony Arrests	2	2
<i>Mean Total Prior Convictions</i>	11	11
Mean Felony Convictions	4	3
Mean Drug Convictions	5	4
Mean Violent Felony Convictions	1	1
Prior Parole Term	33%	34%
Mean Months in Custody	35	35

One-Year Outcomes (N=899)

	Reentry Court	Comparison
<i>Rearrested</i>	40%	44%
Rearrested Misdemeanor	25%	30%
Rearrested Felony	21%	21%
Rearrested Drug	22%	25%
Rearrested Non-Drug	24%	25%
<i>Reconvicted</i>	28%	34%*
Misdemeanor Reconvictions	23%	28%
Felony Reconvictions	6%	10%
<i>Total Revoked</i>	25%	19%
Revoked Technical Violations	15%	8%**
Revoked New Convictions	11%	13%

*p<.05 **p<.01

Two-Year Outcomes (N=526)

	Reentry Court	Comparison
<i>Rearrested</i>	58%	62%
Rearrested Misdemeanor	42%	46%
Rearrested Felony	36%	36%
Rearrested Drug	34%	40%
Rearrested Non-Drug	38%	40%
<i>Reconvicted</i>	44%	51%*
Misdemeanor Reconvictions	35%	42%*
Felony Reconvictions	16%	15%
<i>Total Revoked</i>	45%	31%***
Revoked Technical Violations	17%	8%***
Revoked New Convictions	28%	24%

*p<.05 ***p<.001

Bivariate Findings

- ⊙ Reentry Court's impact somewhat mixed
- ⊙ Reentry Court parolees rearrested less
 - > Did not reach significance
- ⊙ Reentry Court parolees reconvicted less
- ⊙ Reentry Court parolees revoked more
 - > Technical violations significant
 - > Total revocations significant by year 2
 - Driven by technical violation rate

Program Impact

- ⊙ Reentry Court prevents new crime
- ⊙ Negative impact - technical violations
 - > Supervision effects
 - Caseload, increased collaboration and intensity
 - Similar to ISP and some drug court

Policy Implications and Program Modifications

- ◎ Second Chance Act funding
 - > Focused effort to address technical violations
- ◎ Graduated response matrix (VERA)
 - > Sanctions and Incentives
 - > Formalized/Predictable
- ◎ Formalized screening and assessment (COMPAS)
 - > Refine target population
 - > Discover un-treated need areas
 - > Improve treatment/intervention matching
- ◎ CBT for High-Risk Cases
 - > Identify attitudes and behaviors leading to failure
- ◎ Controlled, randomized evaluation